

The Envision Channel Goes Live

An extranet, designed specifically for the construction industry, went live in May, bringing many benefits to the Authority, contractors and stakeholders involved with its minewater treatment schemes.

After a trial at Vinovium, the Dawdon minewater treatment scheme (featured on Page 15) was the first project to receive the Envision Channel, a collaboration extranet hosted by BIW.

BIW Technologies is a global leader in web-based business applications to support successful delivery and management of built assets. Its schemes are being used by major construction companies and other large organisations, including the London 2012 Olympic bid.

By setting up a bespoke extranet for the Dawdon scheme, Business Analyst Helen Godfrey from the Authority's IT Department (just selected as the best Computer Department by Computer Weekly), has been able to ensure that everyone who needs to be kept in the loop can access all the technical details they need at each stage of the project.

Administered by Hayley Tomlinson, Minewater Programme Support Officer in the Authority's Minewater Department, the information available includes, plans, photographs and all correspondence connected with the scheme.

Each project on the channel features a headlines page where all project information can be accessed. Documents, drawings, correspondence and photographs are published in specific registers, keeping certain types of documents together to help with searching for information.

Users can publish, view, share and have simultaneous access to project documents and drawings which they can also update on the system.

Future projects will go live as a result of the Dawdon Envision project, which will provide a base template for all other minewater schemes to be set up on the system.



Urban Amenity

Local residents were involved from the start when the Authority set about planning a minewater treatment scheme in a densely populated area at Goose Green in Wigan.

From a consultation point of view, the scheme, on restored colliery land at Smithy Brook Park, has been a great success, as have the benefits to the local community and wildlife.

Prior to the Authority requiring part of the former spoil heap for a minewater treatment scheme a Groundworks study was carried for Wigan Council out to identify what the local residents would like to see the area of land used for. Suggestions had included an area to be set aside for a nature reserve. This worked well with the Authority's plans for the site, according to Development Manager Carl Banton, who met with the residents' group on several occasions.

Consultations about the minewater scheme with local residents through the Winstanley Highfield Community Network helped to create a scheme featuring a wetland area for ducks and miles of open footpaths, helping to

transform an area of rough ground within the urban area into a valuable local amenity which the residents wanted.

To give the nature reserve a great start, the reedbeds were constructed and planted before the settlement pond and, as these pictures show, wildflowers have quickly become established around the water's edge.

The network of footpaths around the reedbeds is much appreciated by local people as the area is popular with dog walkers.

"The scheme has been a success all round," says Carl Banton. "In addition to preventing 20 tonnes of iron entering the water course each year, it has created a major leisure amenity for the local community.

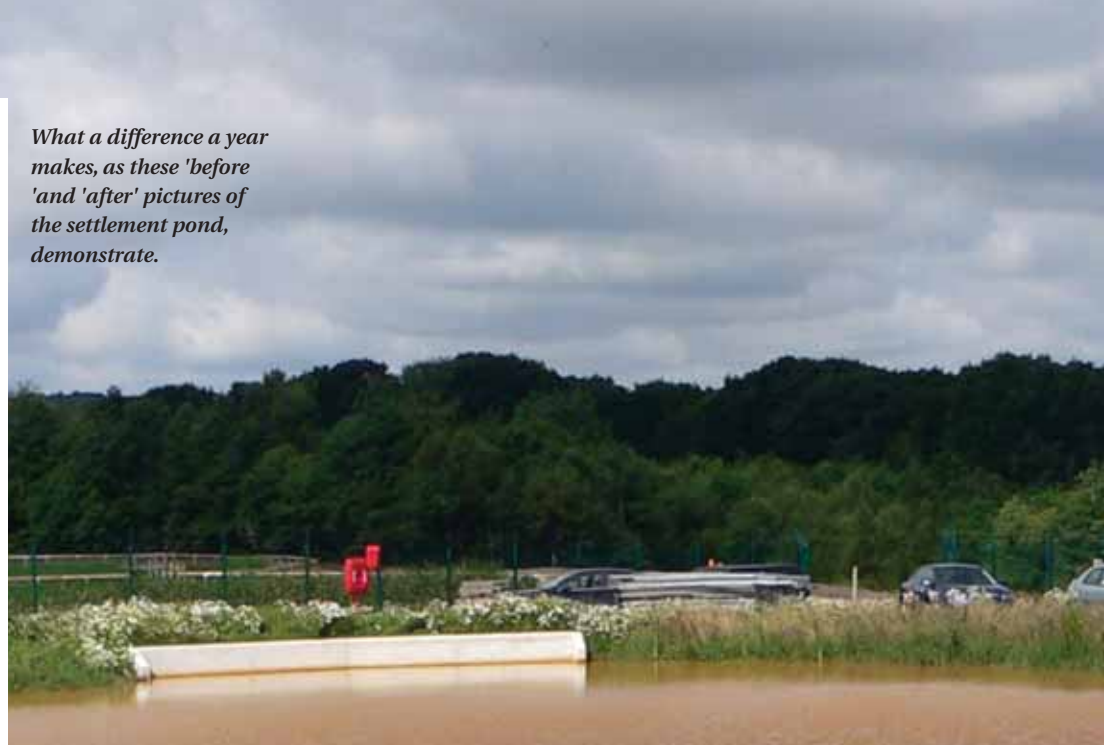
"Everything is working really well and shows what can be achieved when the needs of all parties are taken into consideration."



Sightings of wildlife include ducks in the wetland area at Smithy Brook Park.



What a difference a year makes, as these 'before' and 'after' pictures of the settlement pond, demonstrate.



What a Difference a Year Makes

